

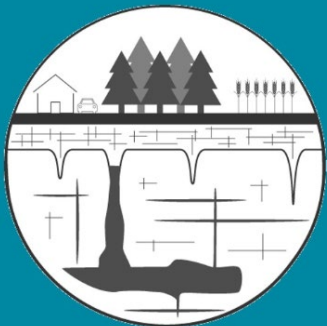
CARBONATE CRITICAL ZONE RESEARCH COORDINATION NETWORK

VIRTUAL WORKSHOP  
CLOSING PLENARY SESSION  
SEPTEMBER 29, 2020



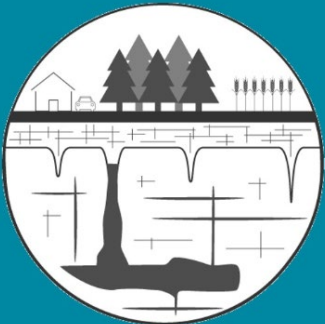
CZO-1905259





## CARBONATE CRITICAL ZONE RESEARCH COORDINATION NETWORK

- Make sure your profile shows your name / add your pronoun
- Please stay muted and keep your video on if possible
- This meeting is being recorded and will be posted on the webpage



# Meeting Agenda

## Objectives and outcomes of Carbonate CZ RCN and Virtual Workshop

### Diversity, Equity and Inclusion: Working towards an Action Plan

- Introduction
- Guest speakers- Dr. Brenee King (KSU) & Dr. Laura Crossey (UNM)
- Q&A and facilitated discussion (*questions in chat & raise hand*)

### Working Group Outcomes:

- Introduction
- Presentations with Q&A (*Specific/clarification questions in chat*)
- Participants select Similar Interest Groups (SIG)

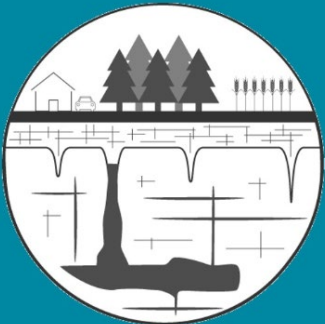
---

### Similar Interest Groups: Moving forward RCN themes

- Breakout groups
- Plenary discussion (*raise hand*)

Announcements

Closing Remarks



## CARBONATE CRITICAL ZONE RESEARCH COORDINATION NETWORK

- How can you participate?

- ✓ Chat:

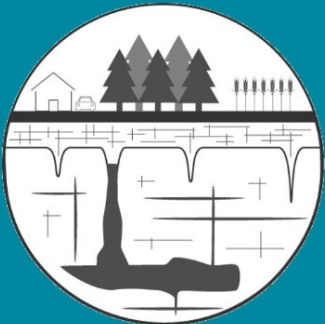
- Questions for the speakers
    - Comment and share ideas with everyone
    - Technical issues: Karen Schlatter

- ✓ Raise hand:

- During Q&A sessions if time allows
    - Plenary discussion

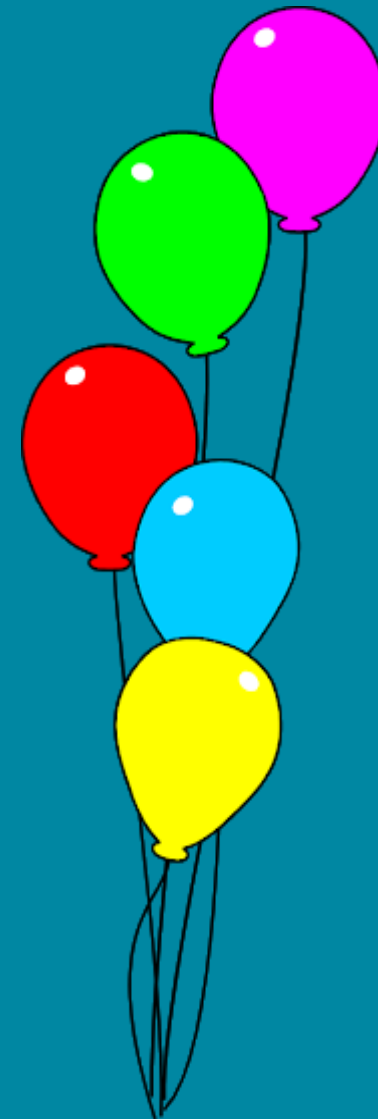
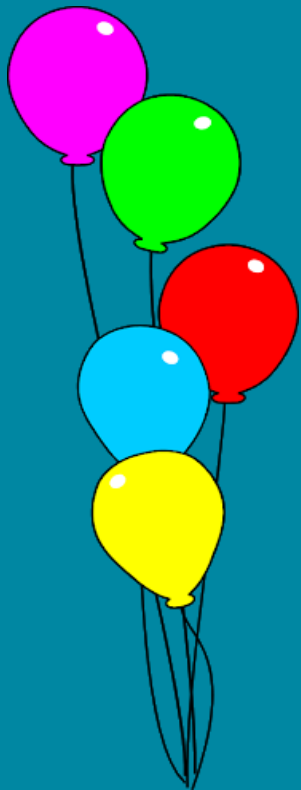
- ✓ Google sheet

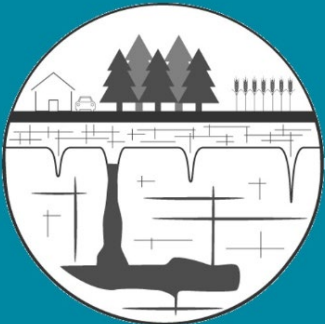
- ✓ Breakout session



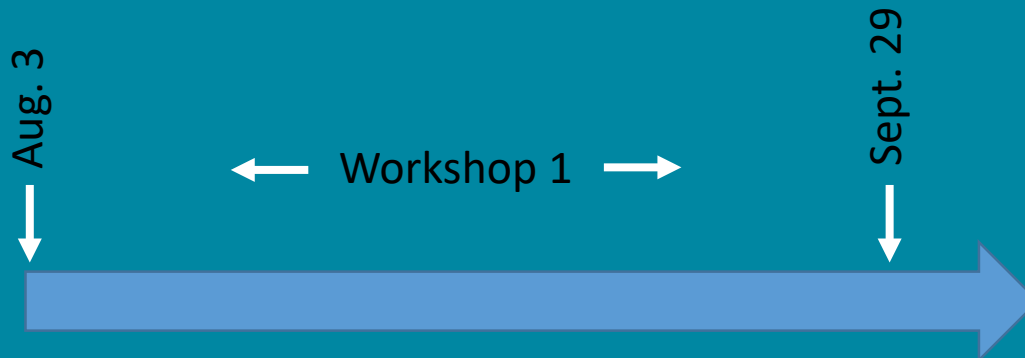
## RCN – Workshop 1

**Thanks to all of you;  
Your participation ensures success!**





## RCN – Workshop 1



### Network

- Integrate the carbonate community
  - Support groups of individuals with common interests
- Expand community beyond workshop participants
- Ensure community is inclusive, equitable, and diverse

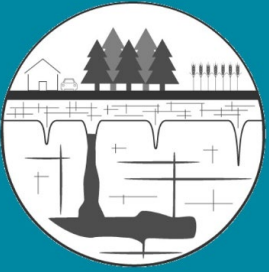
### Research

### Research

- Develop research goals & themes
  - Must be community driven
- Identify what is unknown about carbonate mineral impacts on the CZ
- Enunciate why goals and themes are important

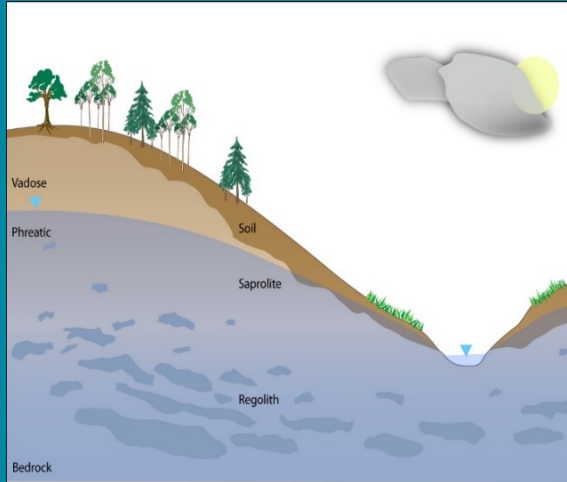
### Coordination

### Network



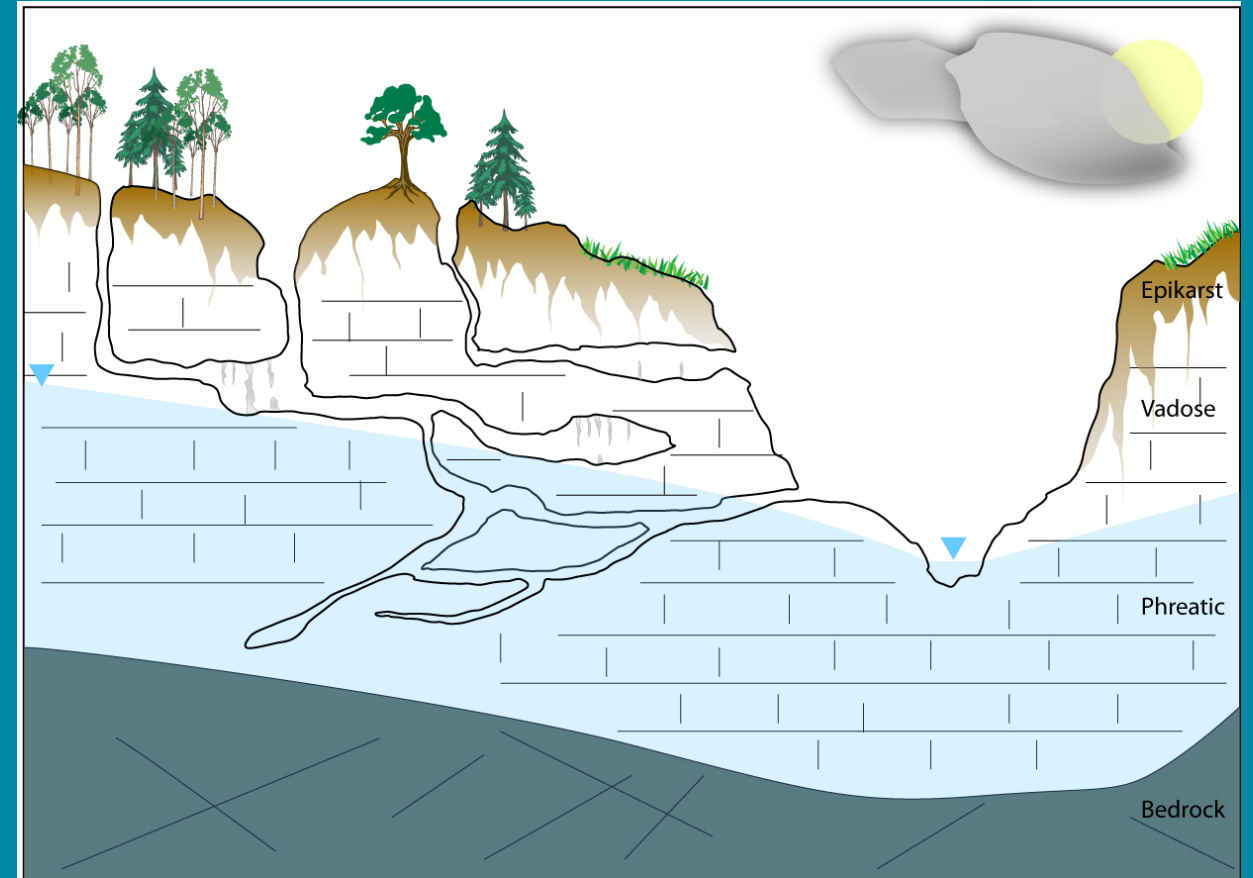
# RCN MOTIVATION

## Silicate CZ



Lithological  
Gradient

## Carbonate CZ



- Research: How does mineral content alter CZ characteristics and processes?
  - External forcing are the same – climate, tectonics – regardless of mineralogy.
  - Focus on (1) mineral gradient and (2) pure end member
- Network: Have common themes emerged?
  - Try to create and facilitate Similar Interest Groups – SIGs

**Use themes and SIGs to foster diversity, equity, and inclusion**